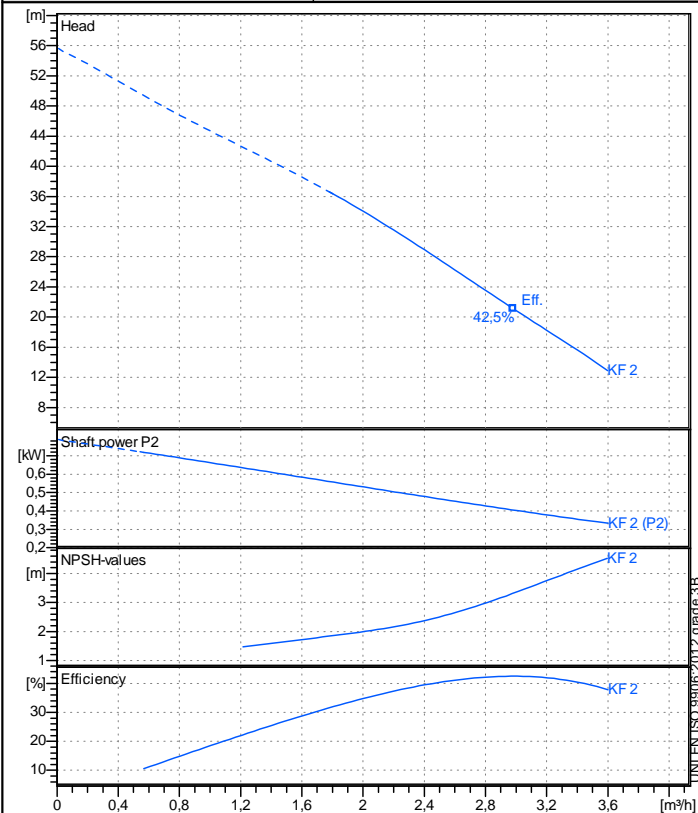


Receiver

From

Company name
Respons. Department
Person in charge
Phone number
Fax no
E-mail address



Operating data specification

Nominal flow	m³/h 0
Nominal head	m 0
Static head	m 0
NPSH - v value of plant	m 0
Inlet pressure	bar 0,09793
Fluid	Water, pure
Operating temperature t A	°C 20
Density at t A	kg/m³ 998,3
Kin. viscosity at t A	mm²/s 1,005

Pump

Pump name	KF 2		
Size			
Design			
Speed rpm	2850	No of stages	1
Impeller type	Peripheral impeller		
Flow	Nominal	m³/h	
	Max-	m³/h	3,6
	Min-	m³/h	1,8
Head	Nominal	m	
	Max-	m	36,4
	Min-	m	12,9
Head H(Q=0)			m 55,6
NPSH 3%			m
Max. working pressure			bar 5,45
Shaft power			kW
Efficiency			%
Max absorbed power			kW 0,71826

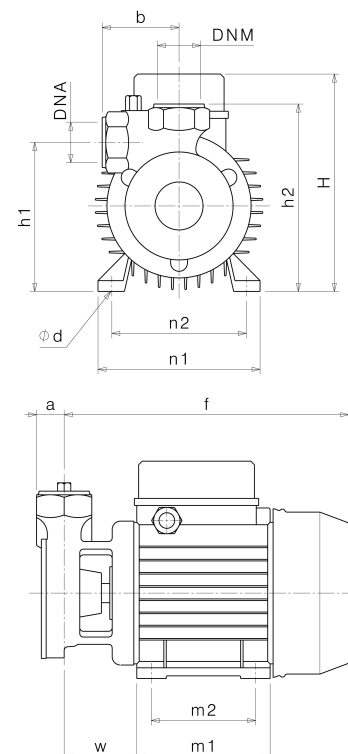
Materials Pump

Shaft	Stainless steel AISI 420 (1.4028)
Impeller	Brass
Pump body	Cast iron EN-GJL-200
Support	Cast iron EN-GJL-200
OR	NBR Rubber
Mechanical seal	BXPG (Gra/Cer/NBR)

Motor	Frame size	71		
Manufacturer / Type	SAER 71 2 - 0,55 1~			
Rated power kW	0,55	Efficiency 4/4		0 %
Electric current A	4,5 A	Speed rpm	2950	
Electric voltage V	230 V	1~	Hz	50
Starting mode	Unknown			
Degree of protection	IP 44	Insulation class		F

Dimensions in mm

a	23
DNA	G 1"
DNM	G 1"
f	237
H	180
h1	124
h2	156
m1	112
m2	90
n1	135
n2	112
od	7
w	64



Remarks:

Project	Project ID	Created by	Created on 2019-02-13	Last update
---------	------------	------------	--------------------------	-------------